

Keck Medicine
of USC



APRU Global Health Program: Student Engagement



SIL Meeting
Sept 2019
University of British Columbia

LEADERSHIP

APRU.
GLOBAL.
HEALTH.
PROGRAM
2019-2020
ADVISORY.
GROUP



Sofia Gruskin (Program Chair), University of Southern California



Melissa Withers (Program Director), University of Southern California



Judith McCool, University of Auckland



Richard Taylor, UNSW Australia



Masamichi Jimba, University of Tokyo



Chang-Chuan Chan, National Taiwan University



Mu Li, University of Sydney



Christina Schöndelner, APRU



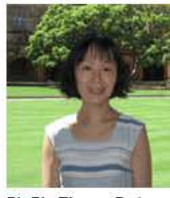
Juhwan Oh, Seoul National University



Sanjay Rampal, University of Malaya



Erlinda Castro-Palaganas, University of the Philippines Baguio



Pin-Pin Zheng, Fudan University

OUTLINE

- VIRTUAL CASE COMPETITION
- DISTANCE EDUCATION COURSES
- 2019 CONFERENCE
- STUDENT AMBASSADOR PROGRAM
- STUDENT SURVEY ON TOBACCO
- QUARTERLY NEWSLETTER SPOTLIGHT
- PUBLICATIONS
- WORKPLACE WELLNESS SURVEY
- VISION FOR 2020

VIRTUAL GLOBAL HEALTH CASE COMPETITION

- Teams of 4-6 students given 10 weeks to prepare a hypothetical program in response to a pressing health topic (disasters, mental health, tobacco control, social media for physical activity).
- Submit a 10-minute video in English proposing a realistic, innovative solution.
- Videos judged by 9-14 experts from around the world, choose three finalists.
- Finalists screened live at the annual conference. Conference participants also vote on winner. 1st place wins US\$500.



VIRTUAL CASE COMPETITION

- **2019: 45 teams from 19 universities**

- Finalists: U of Indonesia, UCLA, U of Hong Kong

- **2018: 27 teams from 13 universities**

- Finalists: **USC**, U of Malaya, Our Lady of Fatima, Gadjah Mada

- **2017: 38 teams from 19 universities**

- Finalists: **U of Indonesia**, Thamassat, U of Sydney

- **2016: 17 teams from 13 universities**

- Finalists: **Our Lady of Fatima**, Kyoto, Tohoku

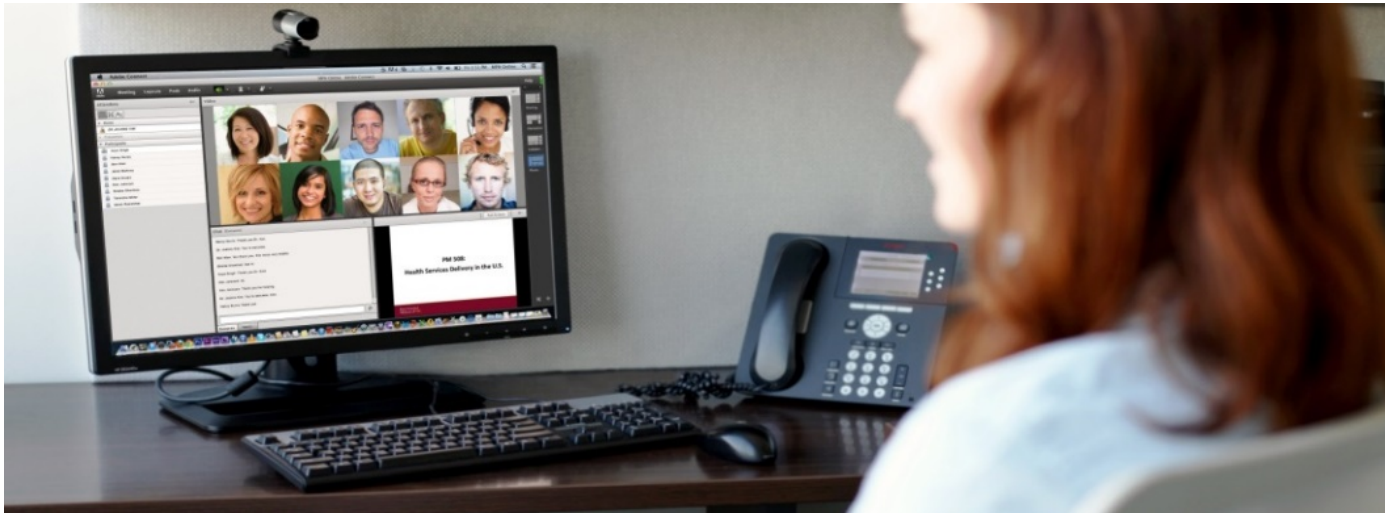


BENEFITS

- Increased GH engagement for students from region
- Introduces critical thinking for real-world GH topics
- Promotes scholastic and digital creativity
- Development of skills (budgeting, evaluation, video production)
- Promotes regional education, partnership and cooperation
- Fosters GH leadership among students
- Generates creative, innovative solutions to challenge topic that could be used by sponsors
- Provides opportunity for students and faculty from LMICs to attend international scientific conference

DISTANCE EDUCATION

- Graduate-level, 30-70 students, inter-disciplinary
- 3-6 partner universities sign on simultaneously once a week for 2 hrs for 10 weeks
- Live guest lectures by renowned global health leaders from WHO, UN, government, NGOs, private sector
- Work in international teams, small group discussions, case studies, final team projects



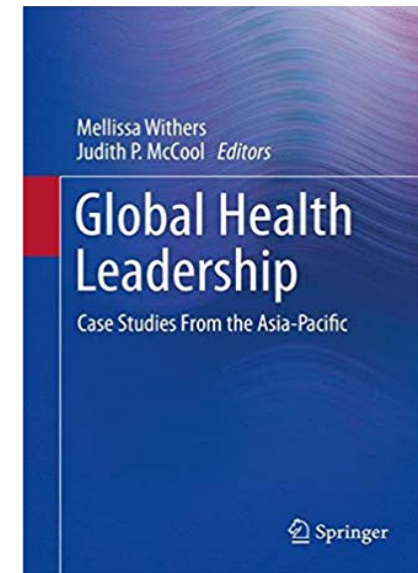
DISTANCE EDUCATION

Global Health Leadership

- 2015, 2016, 2017, 2019
- Focuses on culture, policy, and leadership
- Uses APRU GHP textbook (some by students)
- **Participants:** USC, UCIrvine, Tokyo, NTU, Fudan, Osaka, Malaya

Global Health Ethics

- 2016, 2017, 2018, 2019
- Focuses on cultural perspectives versus international ethics standards, practical application on ethics, emerging ethical issues
- **Participants:** USC, UNAM, HKUST, University of the Philippines, Osaka



2019 ANNUAL CONFERENCE

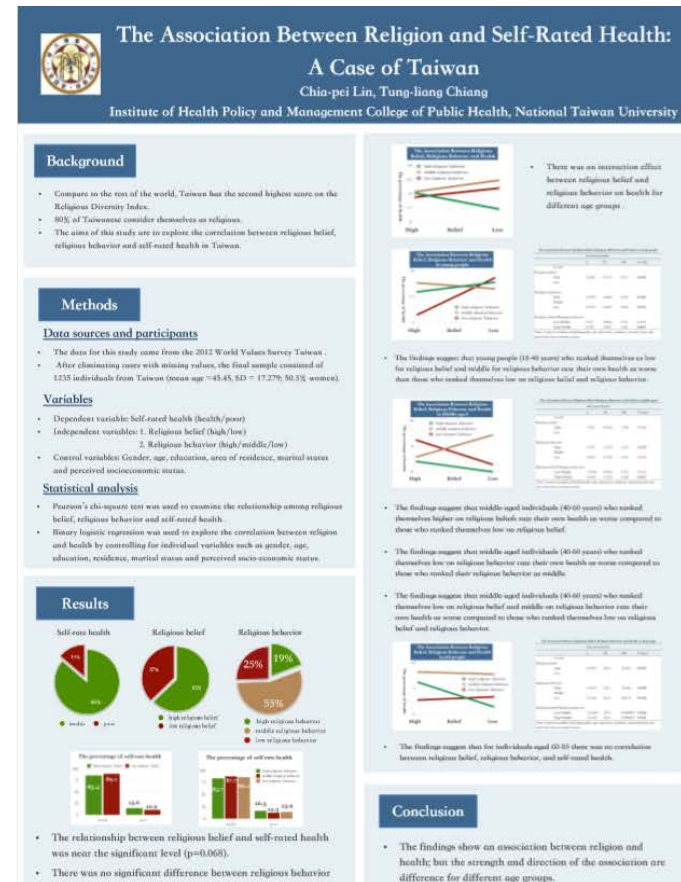
- Student Registration Discounts
- Student Travel Awards
- Student Career Mentoring Sessions
- Student Networking Lunch
- Networking Field Trips
- Half-day Skills-Building Workshops (research methods, etc.)



<https://www.aprughc2019.org/>

STUDENT POSTER CONTEST

- **2019: 54 submissions from 24 universities** (Australia, China, Hong Kong, Indonesia, Japan, Korea, Macao, Malaysia, the Philippines, Singapore, Taiwan, and the US.)
- **2018: 36 posters from 15 universities.**
- **2017: 18 entries from 11 universities.**



OTHER EXAMPLES

GLOBAL HEALTH AMBASSADORS

- 2-3 students to help run the various program activities
- 2019: Meg Rentoria (U of Philippines), Haytham Sheerah (Osaka), Tasdidaa Shamsi (U of Malaya)

STUDENT E-CIG STUDY

- Online survey of 2,000 students from APRU members regarding perceptions, exposure, and use of e-cigs



QUARTERLY NEWSLETTER

STUDENT SPOTLIGHT

Student Spotlight

Clara Ziadeh at University of California, Irvine



Clara Ziadeh is a PhD student at the University of California, Irvine in the department of Epidemiology. Her Ph.D. research is largely framed by her life experiences. Ms. Ziadeh is a worldly soul and multilingual. She was born in Lebanon, where she completed her bachelor degree in nursing and her master's degree in epidemiology. She hopes to work for a global health organization where she can conduct research focusing on cancer population. Her Ph.D. work focuses on the Middle Eastern immigrant population in California, where she studies the impact of ethnic, cultural, genetic background and the environment on the risk of cancer. Her research is funded by grants and in comparison, which are rare and require more efforts.

Student Spotlight

Wang Kexin, Zhejiang University



WANG Kexin believes dedication leads to fulfillment. She is a Master of Engineering candidate at Zhejiang University (ZJU), who fell in love with running marathons after she finished her first run in heavy rain. She also won the third prize in the first Female Bodybuilding Competition at ZJU after years of working out. Wang's research in the College of Control Science & Engineering holds promise as a way of detecting problems in the complex underground pipeline system.

She and her team members invented a novel portable device, Smart Mouse Pipeline Doctor, which can help to construct a three-dimensional underground map of pipelines and identify leakage points with great precision. Based on this technology, Wang even launched a company and served as Chief Operation Officer to promote its application in the real civic system in Hangzhou.

Always seeking new challenges, Wang actively participates in various student organizations and enjoys activities like pole dancing. "During my study at Zhejiang University I have been inspired by the people I met along the way to think broader and make a change," says Wang, "I will always bring what I got here with me: be curious, be passionate and be responsible."

Student Spotlight

Nash A.K. Witten, University of Hawaii



Nash A.K. Witten, MD, is a second-year Family Medicine resident at the University of Hawaii (UH) Family Medicine Residency Program in Mililani, Hawaii. Growing up on Oahu's North Shore provided Dr. Witten with a unique perspective on health care in the islands and nurtured his current interests in rural underserved healthcare delivery and social justice in Hawaii and throughout the Pacific. While a student at the UH John A. Burns School of Medicine, he completed month-long electives in American Samoa participating in high school sports physicals, in New Zealand with rural general practice physicians, and on Ebeye Island of the Republic of the Marshall Islands (RMI) with the pilot project to eliminate tuberculosis there. In his first year of residency, Dr. Witten participated for a month in the RMI's full version of its tuberculosis and Hansen's Disease screening and treatment program. During his residency he expects to do U.S. Department of Veteran's Affairs (VA) rotations in American Samoa and Guam.

As a National Health Service Corps Scholarship Recipient, he is currently deciding between joining the US Public Health Service or working at a local Federally Qualified Health Center upon completion of residency.

PUBLICATIONS

Air Qual Atmos Health
DOI 10.1007/s11869-017-0492-x

Regulation of fine par
perspectives from the

Chang-Fu Wu¹ · Alistair Woodward² ·
Rajasekhar Balasubramanian⁴ · Mohd
Tsun-Jen Cheng⁷ · Chia-Pin Chio⁷ · N
Chang-Chuan Chan^{7,10} · Seung-Muk Y

Annals of
Global Health

W
R
G

EXPERT CONSENSUS DOCUMENTS, RE
Establishing Competenci
Workforce: Recommend
Pacific Rim Universities

Mellissa Withers*, Hsien-Ho Lin*, Terr
and Shubha Kumar*

Background: The Association of Pacific Rim
information, knowledge and experiences in global health education and research among its 50 member
universities. Despite the proliferation of global health educational programs worldwide, a lack of consen
sus exists regarding core competencies in global health training and how these are best taught.
Methods: A workshop was convened with 30 faculty, university administrators, students, and NGO worker
representing both the Global North and South to gain consensus on core competencies in masters'-level
global health training. The co-authors then collaborated to refine the list of competencies, categoriz
them into domains, and develop a plan for how academic institutions can ensure that these competencie
are effectively taught.
Findings: Nineteen competencies across five domains were identified: knowledge of trends and determinant
of global disease patterns; cultural competency; global health governance, diplomacy and leadership
project management; and ethics and human rights. The plan for how academic institutions can bes
train students on these competencies outlined five key opportunities: coursework; practicums; resear
opportunities; mentorship; and evaluation. The plan recommended additional institutional strategies suc
as maximizing collaborative research opportunities, international partnerships, capacity-building grant
and use of educational technology to support these goals.
Conclusions and Recommendations: While further research on the implementation of competency-base
training is warranted, this work offers a step forward in advancing competency-based global health
masters' education as identified by a globally diverse group of expert stakeholders and economies. Given
the challenges facing the current global health landscape, comparable competency-based training across
institutions is critical to ensure the training of competent global health professionals.

Meeting Report

The APRU Global Health Program: Past and Future

Jonathan Samet and Mellissa Withers

University of Southern California Institute for Global Health, Los Angeles, CA USA

Received February 20, 2016; accepted February 28, 2016; released online A

Copyright © 2016 Jonathan Samet et al. This is an open access article distri
permits unrestricted use, distribution, and reproduction in any medium, p

ABSTRACT

The Association of Pacific Rim Universities (APRU) is an
Rim, representing 16 economies, 130 000 faculty members
Health Program aims to expand existing collaborative res
global health issues. Since its launch in 2007–08, the pro
emerging public health threats, ageing and chronic dis
among others. The Program's activities in research, train
dimensions of global health. In this paper, the major activi
discussed.

Key words: Pacific Rim; Asia-Pacific; education; training;

INTRODUCTION

This article is based on a speech presented at the 2015 Global
Health Workshop of the Association of Pacific Rim
Universities (APRU) hosted by Osaka University, on 30–31
October 2015, in Osaka, Japan. The objective is to give an
overview of APRU Global Health Program, outlining the

J Community Health
DOI 10.1007/s10900-017-0439-z

J Epidemiol 2016;26(4):166-170
doi:10.2188/jea.JE20160049



Withers et al. Globalization and Health (2016) 12:34
DOI 10.1186/s12992-016-0162-z

RESEARCH

Open Access



Training the next generation of global
health experts: experiences and
recommendations from Pacific Rim
universities

Mellissa Withers^{1*}, David Press¹, Heather Wipfli¹, Judith McCool², Chang-Chuan Chan³, Masamine Jimba⁴,
Christopher Tremewan⁵ and Jonathan Samet¹

Abstract

Background: Finding solutions to global health problems will require a highly-trained, inter-disciplinary workforce.
Global health education and research can potentially have long-range impact in addressing the global burden of
disease and protecting and improving the health of the global population.

Methods: We conducted an online survey of twelve higher education institutions in the Pacific Rim that spanned
the period 2005–2011. Program administrators provided data on program concentrations, student enrollment and
student funding opportunities for 41 public health programs, including those specific to global health.

Results: The Master of Public Health (MPH) was the most common degree offered. A growing demand for global
health education was evident. Enrollment in global health programs increased over three-fold between 2005–2011.
Very few institutions had specific global health programs or offered training to undergraduates. Funding for student
scholarships was also lacking.

Conclusions: The growing demand for global health education suggests that universities in the Pacific Rim should
increase educational and training opportunities in this field. Schools of medicine may not be fully equipped to
teach global health-related courses and to mentor students who are interested in global health. Increasing the
number of dedicated global health research and training institutions in the Pacific Rim can contribute to building
capacity in the region. Faculty from different departments and disciplines should be engaged to provide
multi-disciplinary global health educational opportunities for undergraduate and graduate students. New,
innovative ways to collaborate in education, such as distance education, can also help universities offer a
wider range of global health-related courses. Additional funding of global health is also required.

the course of these operations. Male urban poor residents
current drug users in the Philippines and 4.8 million in Metro Manila and other key cities of the country have



CrossMark

I Health Practicums: Recommendations
Pacific Rim Universities

ila Declaration on the Drug
Annals of Global Health 2019;
//doi.org/10.5334/agh.28

Globalization and Health

PAPERS

odoro Herbosa* and

health
mplete
ctives,
short-

ment launched an unprec
primarily been viewed as
on implementing a policy
as caught the attention
I Health Program of the
cities in the Pacific Rim,
d on illicit drug abuse in
ciplines. The goal of the
way to address the drug
rights approach to the

iment. This is evidenced by
of the "war on drugs," the
zed punitive measures and
National Police (PNP) and
onwide. With orders from
nt agents have engaged in
tions. One such operation
ied to "shock and awe" drug
lling of 32 people by police

ion of drug use and/or drug
police forces have arrested,
n, women and children in
Male urban poor residents

WORKPLACE WELLNESS SURVEY

- Online survey in 2018 to APRU members
- 29 universities completed
- **96 questions assessing**
 - Basic HR & hiring policies
 - Employee health/well-being program management, data collection, & information dissemination
 - Priorities & Motivations to offer such programs
- **6 Program categories**
 - Physical fitness
 - Nutrition/weight
 - Mental health/stress
 - Sexual and reproductive health
 - Chronic disease prevention
 - Safety
- Link to report will be sent to all members



PARTICIPATING UNIVERSITIES

- U of Auckland
- ANU
- Chinese U of Hong Kong
- Chulalongkorn
- FEFU
- Fudan
- Hong Kong
- HKUST
- Keio
- Korea
- Nagoya
- Nanjing
- Nanyang Tech
- National Taiwan
- National Tsinghua
- National U of Singapore
- Osaka
- Peking
- POSTECH
- Seoul National
- Tech de Monterrey
- Tohoku
- Tsinghua
- UC Davis
- UC Irvine
- UCLA
- UC San Diego
- UCAS
- U of Chile
- U of Hawaii
- U of Indonesia
- U of Malaya
- U of New South Wales
- U of Oregon
- U of the Philippines
- UST of China
- USC
- U of Sydney
- U of Washington
- Waseda
- Yonsei
- Zhejiang

VISION FOR 2019-2020

- Workplace Wellness Survey
 - Healthy Women, Healthy Economies
- More publications
- 2020 Conference at Fudan University

THANK YOU!

mwithers@usc.edu

